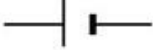


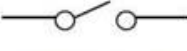
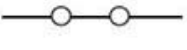


Circuit Symbols

SYMBOL	Can you copy the symbol?
 Battery	
 Lamp	
 Wire	
 Switch (open)	
 Switch (closed)	

Created by Iman Bendjedidi for www.ImanSHomeschool.wordpress.com

Circuits

Fill in the missing words

loop complete energy path negative
positive electricity

A circuit is a _____ that allows _____ to pass through it.

Electricity always travels from the _____ to the _____.

A circuit will only work if it is _____. This means it must make a complete _____, otherwise the electrical _____ cannot flow.

Draw arrows on the diagram to show which way round the electricity is flowing.

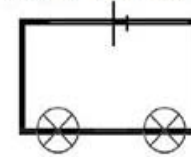


Created by Iman Bendjedidi for www.ImanSHomeschool.wordpress.com

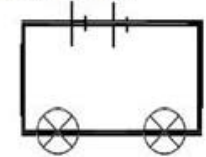
Can you label these symbols?



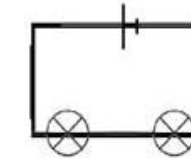
Look at the following circuits. Can you work out how many of each component is in each circuit?



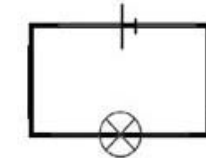
There are



There are



There are



There are

Created by Iman Bendjedidi for www.ImanSHomeschool.wordpress.com